

4

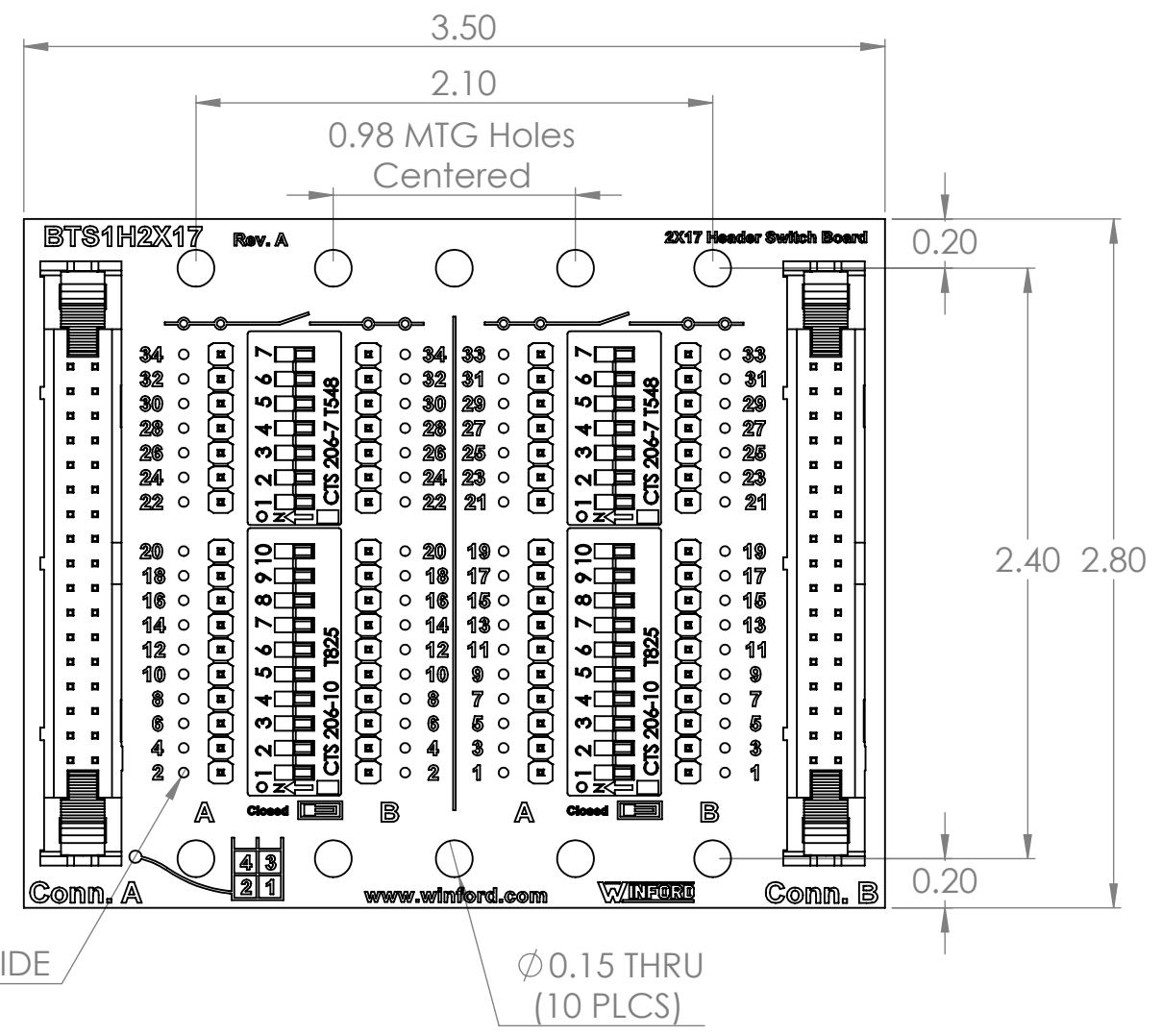
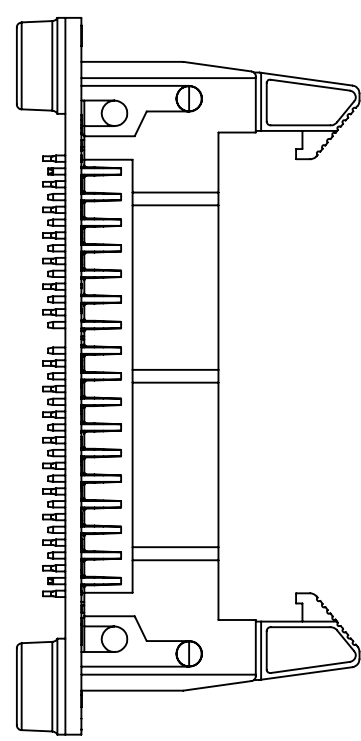
3

2

1

B

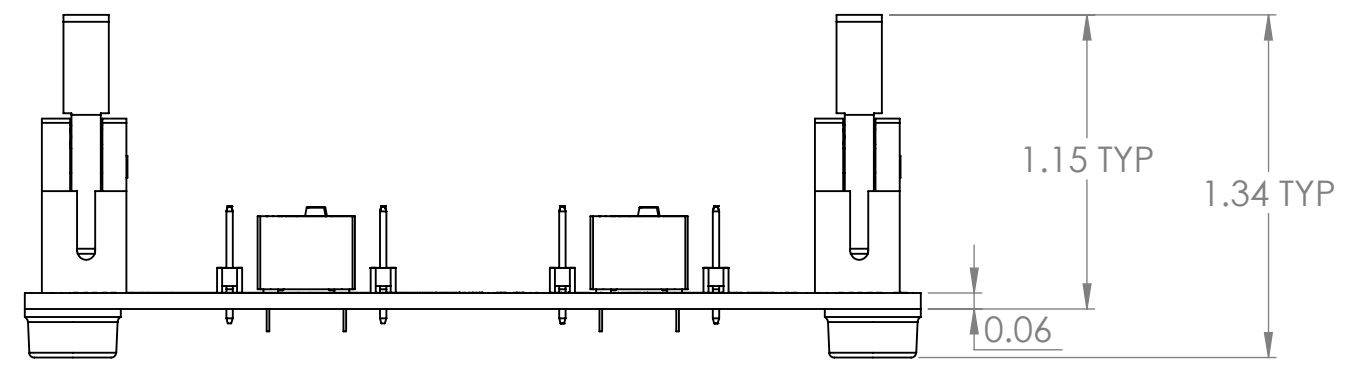
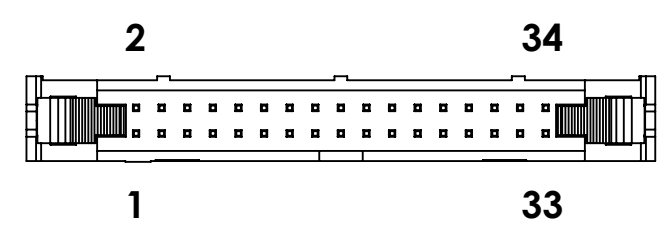
B




A

A

### Connector Pinout



DIM: INCH	DATE: 01/13/2022	RoHS COMPLIANT: Yes	DESCRIPTION: 2X17 0.1" Header Diagnostic Breakout Board
 WINFORD ENGINEERING, LLC 4561 GARFIELD ROAD AUBURN, MI 48611		PART NUMBER (S) <b>BTS1H2X17-FT</b>	PART REVISION <b>A</b>
www.winford.com		989-671-9721	

4

3

2

1