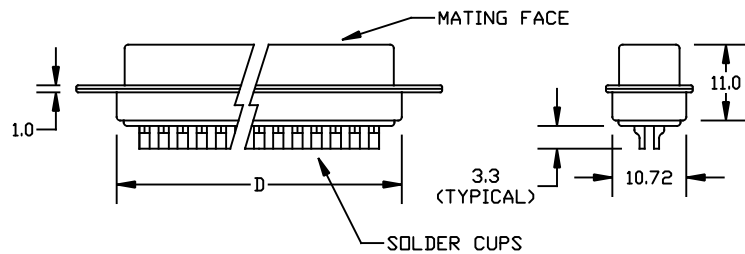
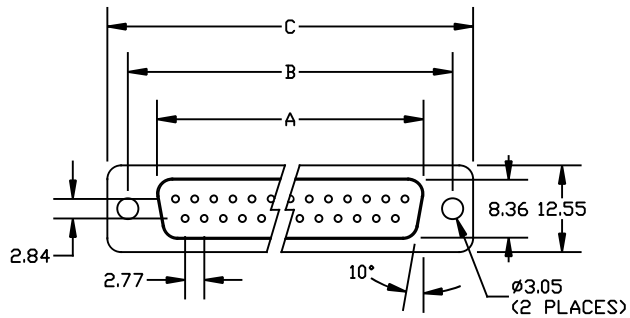
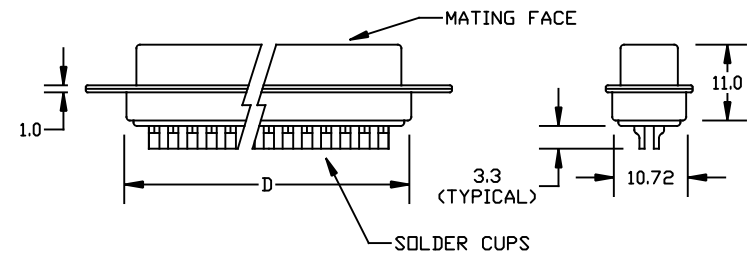
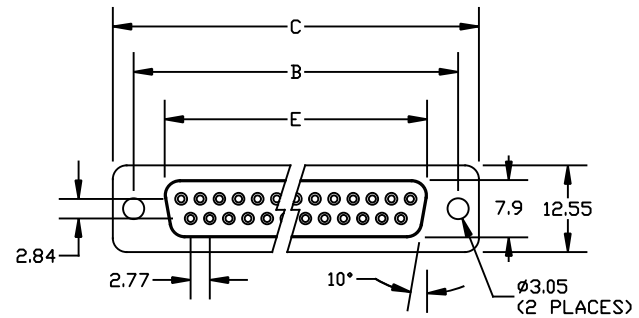


# CNS SERIES: D-SUB SOLDER CUP CONNECTORS

## CNS<sub>x</sub>xM: D-SUB MALE



## CNS<sub>x</sub>xF: D-SUB FEMALE



### DIMENSIONS

POSITION	A	B	C	D	E
9	16.92	25.0	30.8	19.3	16.33
15	25.25	33.3	39.2	27.5	24.66
25	38.96	47.1	53.1	41.3	38.38
37	55.42	63.5	69.4	57.7	54.84

1. SHELL PLATING: TIN
2. CONTACT PLATING: SELECTIVE GOLD FLASH
3. OPERATING TEMPERATURE: -40°C TO +105°C

DESCRIPTION:  
CNS SERIES: D-SUB SOLDER



Winford Engineering  
4561 Garfield Road  
Auburn, MI 48611

[www.winford.com](http://www.winford.com)

989-671-9721

DIMENSIONS ARE IN MILLIMETERS