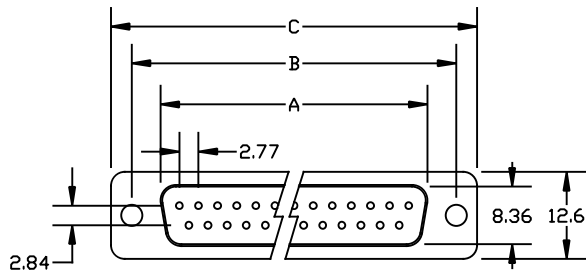
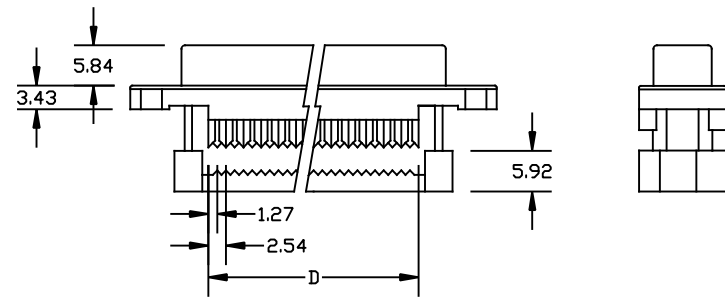
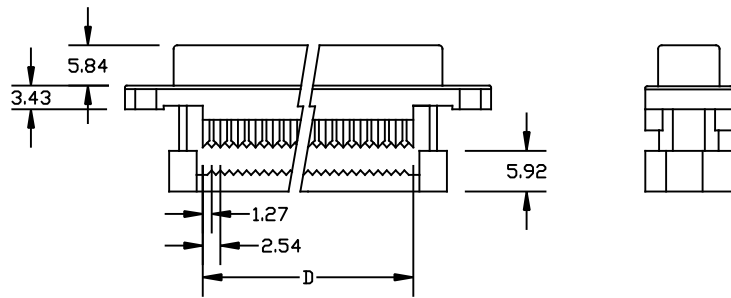
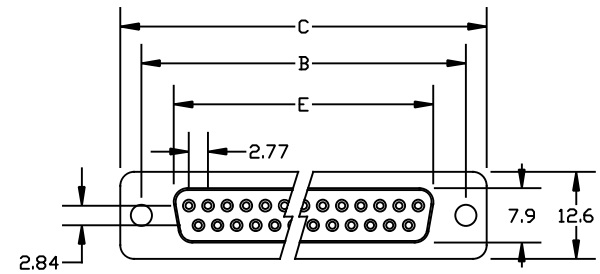


CNI SERIES: D-SUB IDC FLAT RIBBON CABLE CRIMP CONNECTORS

CNI_xxM-*: D-SUB IDC MALE



CNI_xxF-*: D-SUB IDC FEMALE

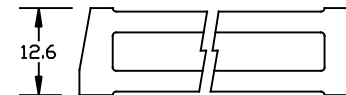
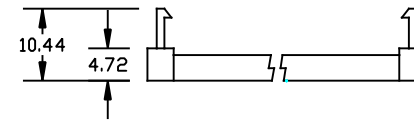


DIMENSIONS

POSITION	A	B	C	D	E
9	16.92	25.0	30.8	10.16	16.30
15	25.25	33.3	39.1	17.78	24.50
25	38.96	47.1	53.1	30.48	38.30
37	55.45	63.5	69.5	45.72	54.80

1. METAL SHELL. PLATING: TIN
2. OPERATING TEMPERATURE: -40°C TO +105°C

STRAIN RELIEF (INCLUDED)



DIMENSIONS ARE IN MILLIMETERS

DESCRIPTION:
CNI SERIES: D-SUB IDC CRIMP



Winford Engineering
4561 Garfield Road
Auburn, MI 48611

www.winford.com

989-671-9721

CNI SERIES: D-SUB IDC FLAT RIBBON CABLE CRIMP CONNECTORS

PART NUMBER ORDERING OPTIONS

CNI□□□-□□-□-□□□

Color: BLU (Blue) or BLK (Black)

Hardware: H (Unthreaded holes); I (Threaded Inserts)

Contact Plating: SF (Selective Gold Flash)

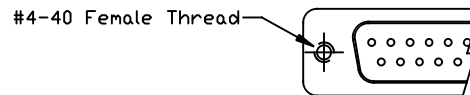
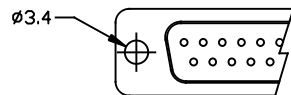
Gender: F (Female/Socket); M (Male/Plug)

Positions: 09, 15, 25, 37

HARDWARE OPTIONS

-H: Unthreaded holes

-I: Threaded Inserts



DIMENSIONS ARE IN MILLIMETERS

DESCRIPTION:

CNI SERIES: D-SUB IDC CRIMP



Winford Engineering
4561 Garfield Road
Auburn, MI 48611

www.winford.com

989-671-9721