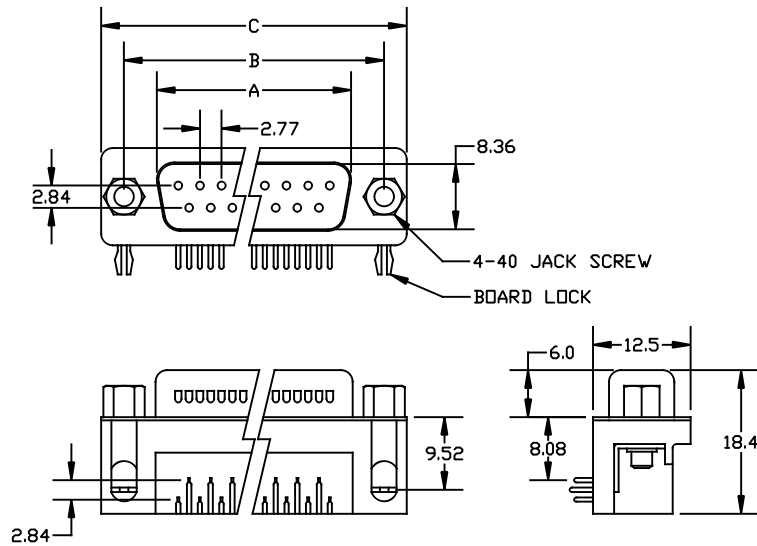


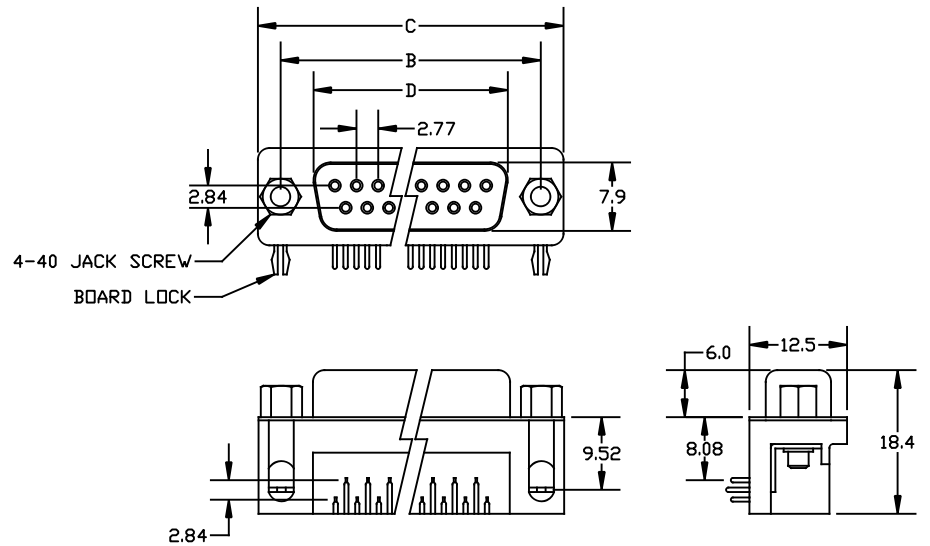
↓

CNR SERIES: D-SUB RIGHT ANGLE
7.2/8.08mm (.318") FOOTPRINT

CNRxxM: D-SUB MALE



CNRxxF: D-SUB FEMALE

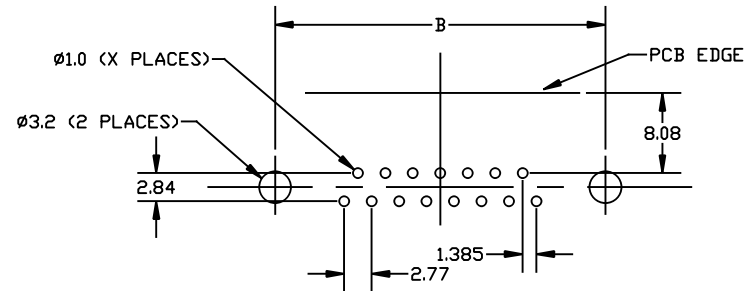


DIMENSIONS

POSITION	A	B	C	D
9	16.92	25.0	30.8	16.33
15	25.25	33.3	39.2	24.66
25	38.96	47.1	53.1	38.38
37	55.42	63.5	69.4	54.84

1. SHELL PLATING: TIN
2. CONTACT PLATING: GOLD FLASH
3. OPERATING TEMPERATURE: -40°C TO +105°C

RECOMMENDED PCB FOOTPRINT



↑

DIMENSIONS ARE IN MILLIMETERS

DESCRIPTION:
CNR SERIES: D-SUB RIGHT ANGLE



Winford Engineering
4561 Garfield Road
Auburn, MI 48611

www.winford.com

989-671-9721